



Kootenai Health

Specialty Reference Guide

This directory includes Kootenai Health and Kootenai Clinic employed physicians and providers who directly accept patient referrals and consults.



Key Clinic & Hospital Contacts

Outreach Liaison Team



Sarah Cushman
Regional Development
& Clinical Outreach Manager
509.979.7482
scushman@kh.org



Tolly Whillhite
Outreach Liaison
208.755.5397
twillhite@kh.org

Territory: Bonner, Boundary, Kootenai, Shoshone, Lincoln, Pend Oreille, and Spokane county.



Zachary Love
Outreach Liaison
586.801.8332
zachary.love@kh.org

Territory: Benewah, Latah, Nez Perce, Lewis, Clearwater, Idaho, Whitman, and Asotin county.

NEW! – PROVIDER & CLINIC ONLINE RESOURCE (Coming Soon!)

kh.org/for-providers

The NEW webpage provides information frequently used by referring providers, clinics and hospitals in a single location so you and your team can quickly find the information you need to care for patients. We encourage you to check back regularly for new events and information.

- Referrals and order forms
- Transfer center information
- Surgery contacts and documents
- EpicCare Link: Web-based EMR access
- CME opportunities
- Key resources for clinics
- Medical staff office

Scan the QR code
to view the specialty
reference guide online.



EpicCare Link

EpicCare Link is a free, secure, web-based application connecting community and affiliate-based providers and staff to patient information in the Kootenai Health System Electronic Medical Record (EMR). The EpicCare Link online portal provides access to patient information including demographics, chart review, future appointments, diagnostic results, operative notes, discharge summaries and procedure notes – when and where you need it.

To request access, please contact your Outreach Liaison or email outreach@kh.org.

Request Patient Records

Referring providers can request patient records, amendments, or report records received in error by contacting Kootenai Health's Health Information Management (HIM) department at:

Kootenai Health

Attn: Medical Records
2003 Kootenai Health Way
Coeur d'Alene, ID 83814

Contact information:

208.625.6251 **tel**
208.625.6247 **fax**
HIMROI@kh.org **email**

To ensure privacy, patient identity will be verified before releasing records, which can be sent directly to a provider, picked up in person, mailed, or delivered via secure email, with large files potentially requiring multiple emails.

Key Hospital & Clinic Numbers

Kootenai Health

		Toll-free
Kootenai Health	208.625.4000	800.562.9608
24/7 Admit & Consult	208.625.6908	
Behavioral Health	208.625.4800	800.221.5008
Customer Service	208.625.5000	888.974.1235
Compliance Hotline	877.631.0019	
Emergency Services	208.625.5700	
Family Birth Center	208.625.6891	
Guest Services Hotline	208.625.6600	
Help Desk	208.625.5555	
Hospitality Center	208.769.3700	
Imaging Services	208.625.6300	
Infection Prevention	208.625.3445	
Interpreter Service	888.302.4348	
Infusion Services	208.625.6926	
Kootenai Care Network	208.625.6611	
Laboratory Services	208.625.5858	
Medicine Presurgical Assessment	208.625.3110	
Medical Records	208.625.6222	
Medical Staff Services	208.625.5081	
Neonatology	208.625.5088	
Obstetric Hospitalists	208.625.6908	
Patient Advocacy	208.625.4298	
Pediatric Hospitalists	208.625.5930	
Pharmacy	208.625.5678	
Transitional Care Services	208.625.4297	
Transportation Services	208.625.5030	
Trauma Services	208.625.5718	

Kootenai Clinic

Appointment Center (patient)	208.625.6767
Anticoagulation Services	208.625.5688
Cancer Services	208.625.4700
Cardiology	208.625.5250
Cardiothoracic Surgery	208.625.4120
Dermatology	208.625.4333
Diabetes & Endocrinology	208.625.5500
Ear, Nose, Throat & Audiology	208.625.5160
Gastroenterology & Endoscopy	208.625.4595
General Surgery	208.625.5200
Hand Surgery	208.625.4680
Heart Clinics	208.625.5250
Infectious Disease	208.625.6970
Laboratory	208.625.4676
Lung & Asthma	208.625.3555
Maternal Fetal Medicine	208.625.4970
Memory Consultation Clinic	208.625.4515
Nephrology	208.625.6100
Neurology	208.625.5100
Neurosurgery & Spine	208.625.3800
Obstetrics & Gynecology	208.625.4970
Orthopedics	208.625.6700
Physical Medicine & Rehabilitation	208.625.5100
Plastic & Reconstructive Surgery	208.625.4333
Rheumatology	208.625.4780
Sleep Medicine	208.625.6877
Vascular Surgery	208.625.5222
Wound Care	208.625.6944

Table of Contents

Kootenai Clinic

Ancillary Services

Imaging Services	5
Laboratory Services	6
Rehabilitation Services	7

Anticoagulation Services 8

Brain & Spine Services

Neurology	9
Neurosurgery & Spine	10
Physical Medicine & Rehabilitation	11

Cancer Services 12

Cardiovascular Services

Interventional Cardiology & Cardiology	13-14
Cardiothoracic Surgery	15
Electrophysiology	16
Vascular Surgery	17

Dermatology 18

Diabetes & Endocrinology 19

Ear, Nose, Throat, & Audiology 20

Gastroenterology & Endoscopy 21-22

General Surgery 23

Infectious Disease 24

Lung & Asthma/Critical Care 25-26

Medicine Presurgical Assessment Clinic 27

Memory Consultation Clinic 28

Nephrology 29

Orthopedics 30-31

Plastic & Reconstructive Surgery 32

Podiatry 33

Rheumatology 34

Sleep Medicine 35

Women's & Children's Services

Maternal Fetal Medicine	36
Neonatology	37
Obstetrics & Gynecology	38
Obstetric Hospital Medicine	39
Pediatric Hospital Medicine	40

Wound Care 41-42

Ancillary Services - Imaging

Proudly Serving Northern Idaho and the Inland Northwest

Kootenai Health Imaging Services

Patients may have imaging completed at Kootenai Health or at Kootenai Outpatient Imaging. Patients who are currently admitted to the hospital, in an emergency, or who require an MRI or a Nuclear Medicine procedure, will have imaging completed within the hospital.

Kootenai Outpatient Imaging

Kootenai Outpatient Imaging delivers accurate results promptly, treats patients with respect and compassion, and empowers them and their care team with the knowledge necessary to make informed decisions about their health. Our team of experienced radiologists and medical professionals are dedicated to providing exceptional care and personalized attention so patients are informed and supported throughout their visit.

Convenience

- Evening and weekend appointment times available to accommodate many schedules
- In-house prior authorization team
- Easily schedule mammograms through the MyChart app
- Beautiful Women's Imaging Center offering mammograms and breast ultrasound in a comfortable environment

SERVICES OFFERED

We offer a wide range of services and innovative technology to meet a variety of diagnostic needs and ensure accurate and detailed results.

- 3D Mammography
- Automated Breast Ultrasound
- CT Scan
- PET/CT
- X-Ray
- Bone Density Scans
- MRI
- Ultrasound
- Nuclear Medicine
- Volumetric MRI

ACCREDITATIONS & CERTIFICATIONS

- The only imaging center in Northern Idaho to achieve the **National Accreditation Program for Breast Centers (NAPBC)** administered by the American College of Surgeons.
- **Accredited by the American College of Radiology** as a Comprehensive Breast Imaging Center.



South Entrance

2003 Kootenai Health Way
Coeur d'Alene, ID 83814
208.625.6360 **tel**
208.625.6361 **fax**



Kootenai Clinic

700 W. Ironwood Dr., Suite 175
Coeur d'Alene, ID 83814
208.625.6300 **tel**
208.625.6301 **fax**

Kootenai Clinic Post Falls

1300 E. Mullan Ave.
Post Falls, ID 83854
208.625.5564 **tel**
208.625.5565 **fax**

Ancillary Services - Laboratory

Proudly Serving Northern Idaho and the Inland Northwest

Kootenai Health Laboratory Services

Kootenai Health's experienced laboratory scientists, pathologists, and specialists provide services that support acute care, emergency care, and routine outpatient testing. We offer comprehensive in-house testing capabilities and three convenient locations for our patients.

FULL-SERVICE CLINICAL LABORATORY

- Chemistry
- Hematology
- Microbiology
- Coagulation
- Molecular microbiology
- Transfusion medicine
- Immunology
- Endocrinology
- Toxicology Urinalysis

SERVICES OFFERED

- Same-day turnaround time
- In-office phlebotomists
- Most testing done locally with our expansive test menu, including Blood Bank testing
- Visit <https://kootenaihealth.testcatalog.org> for test information and specimen requirements
- Test results in Epic MyChart (beneficial for patients, especially those who deliver in our Family Birth Center)
- Prompt patient access to lab results via Epic MyChart
- Flexible billing arrangements (patient and client bill)
- Courier services and clinic lockboxes

Kootenai Health's Outpatient Lab

Kootenai Health (hospital campus, first floor)
2003 Kootenai Health Way
Coeur d'Alene, ID 83814

Hours

Monday - Saturday, 6:00 am - 8:00 pm
Sunday 8:00 am - 2:30 pm

Three convenient **Patient Service Center** locations for blood draws or specimen drop-offs:

Coeur d'Alene

Kootenai Clinic
1919 Lincoln Way, Suite 111
Monday - Friday, 6:30 am – 5:00 pm

Post Falls

Kootenai Clinic
1300 E. Mullan Ave., Suite 800
Monday - Friday, 6:30 am – 5:00 pm

Hayden

Kootenai Clinic
566 W. Prairie Ave.
Monday - Friday, 8:00 am – 4:00 pm

All locations serve patients on a walk-in basis.

For more detailed information visit Kootenai Health's Laboratory Services website www.kh.org/khls

Ancillary Services - Rehabilitation

Proudly Serving Northern Idaho and the Inland Northwest

Kootenai Health Rehabilitation Services

Kootenai Health provides comprehensive rehabilitation services to help patients achieve their best possible outcomes. Through dedicated service and compassionate care, our team believes rehabilitation services plays a vital role for patients in their health care journey.

As one of the largest rehabilitation service providers in our region, our patients benefit from a team approach. This means patients are able to complete a full spectrum of treatments, procedures, and consultations from a multidisciplinary team of therapists for an individualized and comprehensive care plan.

Our rehabilitation services department serves patients during and after hospital treatment for a seamless care transition as well as provides robust outpatient therapy services for the community.

SERVICES OFFERED

- Physical therapy
- Occupational therapy
- Speech therapy
- Pediatric therapy
- Aquatic therapy

SPECIALTY PROGRAMS

- ASTYM
- Concussion therapy program
- Fiberoptic Endoscopic Evaluation of Swallowing (FEES)
- LSVT Global (Lee Silverman Voice Treatment)
- Temporomandibular Joint (TMJ) disorders
- Pelvic floor health
- Interactive metronome
- ACL injury prevention
- Dysphagia (Swallowing problems)
- Lymphedema
- Spinal cord injury therapy
- Peg tube
- Vestibular therapy



Rehabilitation Services

Coeur d'Alene

2003 Kootenai Health Way
Coeur d'Alene, ID 83814
208.625.5311 **tel**
208.625.4184 **fax**

Coeur d'Alene

2180 Ironwood Center Drive
Coeur d'Alene, ID 83814
208.625.3680 **tel**
208.625.3681 **fax**

Coeur d'Alene

2236 N. Merrit Creek Loop, Suite B
Coeur d'Alene, ID 83814
208.625.4100 **tel**
208.625.4101 **fax**

Post Falls

1300 E. Mullan
Post Falls, ID 83854
208.625.5333 **tel**
208.625.5377 **fax**

Anticoagulation Services

Proudly Serving Northern Idaho and the Inland Northwest

Kootenai Health's Anticoagulation Services optimizes the management of patients on anticoagulant therapy, particularly those on warfarin, DOACs (e.g., apixaban, rivaroxaban), heparin, and other agents. The primary goal is to ensure safe, effective, and evidence-based anticoagulation, minimizing thromboembolic risk while reducing bleeding complications.

SERVICES OFFERED

Therapeutic Monitoring & Dosing

- INR monitoring and warfarin dose adjustments based on validated protocols.
- DOAC dosing verification per renal/hepatic function, indication, and drug interactions.

Patient Education & Counseling

- Initial and ongoing education regarding medication adherence, dietary considerations, bleeding risk, interactions, and procedural management.

Peri-Procedural Anticoagulation Management

- Coordination of bridging therapy when indicated.
- Risk stratification and management plans for surgeries and invasive procedures.

Transition of Care Support

- Assistance with initiation, switching, or discontinuation of anticoagulants.



Jamie Cervi-Skinner,
PharmD



Tavis Osler, PharmD



Jamie Park, PharmD



Kathy Widmyer, RPh



Kootenai Clinic

Anticoagulation Services

700 W. Ironwood Dr., Suite 246
Coeur d'Alene, ID 83814
208.625.5688 **tel** 208.625.5687 **fax**

Kootenai Clinic Neurology specializes in the diagnosis and treatment of a wide range of patients in both an outpatient setting in our clinic office and inpatients in the hospital.

COMMON CONDITIONS TREATED

- Seizure/Epilepsy - including a four bed Epilepsy Monitoring Unit, device implantation and management (RNS, DBS, VNS)
- Stroke and TIA clinics (ischemic stroke, hemorrhagic stroke, CVST, RCVS, PRES, arterial dissection, CAA)
- Movement disorders - Parkinson's disease, tremor, dystonia including DBS management and Botox
- Multiple Sclerosis (MS) and other demyelinating disorders
- Neuromuscular conditions - ALS, myopathy, peripheral neuropathy, Myasthenia Gravis
- Headache clinic – migraine management, Botox, occipital nerve blocks
- Electrodiagnostic studies - EMG/Nerve conduction studies, EEG

SERVICES OFFERED

- Telehealth/virtual visits
- Infusion center
- Full-service, advanced imaging capabilities

DESIGNATIONS

- National Multiple Sclerosis Society Center for Comprehensive MS Care
- National Association of Epilepsy Centers (NAEC) Level 3
- Level II Stroke Center designated by the state of Idaho's Time Sensitive Emergency System (TSE)



Nina Bozinov, MD
Multiple Sclerosis,
Neuroimmunology



Michah Brasseur, MD
Neuromuscular Disorders



Cliff Hampton, MD
Epilepsy



Lizl Lasky, DO
Electrodiagnostics,
General Neurology



Cynthia Murphy, MD
Acute Care for
Cerebrovascular/Stroke



Angela Pana, MD
Movement Disorders



Matthew Womeldorff, MD
Electrodiagnostics,
Cerebrovascular Disease,
General Neurology, Acute
Care (inpatient) Neurology



Bailey Braun, PA-C
General Neurology



Chase Cullen, PA-C
Multiple Sclerosis,
Migraine/Headache



Eric Schubert, PA-C
Headache,
Movement Disorders



Megan Strowd, PA-C
Acute Care for
Cerebrovascular/Stroke



Jason Wright, APRN
General Neurology



Kootenai Clinic

Neurology

700 W. Ironwood Dr., Suite 158
Coeur d'Alene, ID 83814

208.625.5100 **tel** 208.625.5101 **fax**

Our neurosurgery service line offers comprehensive, cutting-edge care for complex neurological conditions, featuring a dedicated back and spine pain program seamlessly integrated to provide specialized, multi-disciplinary treatment for patients. We prioritize precision, innovation, and patient-centered outcomes to address a full spectrum of neurosurgical needs.

CONDITIONS TREATED

Brain

- Metastatic brain tumors
- Meningioma
- Radiculopathy
- Deep Brain Stimulation (DBS)
 - Parkinsons
 - Essential tremor
- Glioblastoma/Gliomas
- Pituitary tumors
- Epilepsy surgery

Spine

- Spine tumors
- Spinal cord compression
- Degenerative scoliosis
- Spinal stenosis
- Nerve compression
- Back and spine pain

PROCEDURES OFFERED

- Stereotactic craniotomy for tumor resection
- Cervical and lumbar discectomy
- Spinal fusion procedures
- Laminectomy
- Ventriculoperitoneal shunting
- Neuropace responsive neurostimulation (RNS)
- Deep brain stimulation (DBS)
- Spinal cord stimulator implantation
- Chiari decompression
- Robotic-guided spinal surgery (using the Global Excelsius robot)



Erik Larson, MD



Abigail McCallum, MD



John McGowan, MD



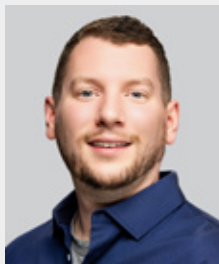
Michael Raber, MD,



Erica Anderson, APRN



Christopher Handyside, PA-C



Alexander Perry, APRN



Magen Schmidt, PA-C



Serena Warf, PA-C



Kootenai Clinic

Neurosurgery & Spine

2288 Merritt Creek Loop, Suite 200

Coeur d'Alene, ID 83814

208.625.3800 **tel** 208.625.3801 **fax**

Patients can expect compassionate, patient-centered care at Kootenai Clinic Physical Medicine and Rehabilitation (PM&R). Our team of highly skilled physiatrists and rehabilitation specialists are dedicated to restoring function, reducing pain, and improving quality of life. We provide comprehensive, individualized treatment plans to support recovery and long-term wellness.



Glen House, MD

SERVICES OFFERED

- Non-surgical management of musculoskeletal conditions
- Electromyography (EMG) and nerve conduction studies
- Joint and soft tissue injections (cortisone, hyaluronic acid)
- Trigger point injections
- Epidural steroid injections
- Spinal cord injury (SCI) and paraplegia rehabilitation
- Botox injections for spasticity management
- Stroke and neurological rehabilitation
- Amputee rehabilitation and prosthetic training
- Sports medicine and injury rehabilitation
- Chronic pain management
- Physical and occupational therapy coordination

GENERAL PM&R CONSULTATIONS

- Back and neck pain
- Osteoarthritis and joint pain
- Tendonitis and bursitis
- Peripheral neuropathy
- Post-surgical rehabilitation



KootenaiClinic

Physical Medicine

700 W. Ironwood Dr., Suite 158

Coeur d'Alene, ID 83814

208.625.5100 **tel** 208.625.5101 **fax**

Cancer Services

Proudly Serving Northern Idaho and the Inland Northwest

Kootenai Clinic's Cancer Services emphasizes a multidisciplinary approach, bringing together specialists in oncology, surgery, radiation, and other fields to create personalized treatment plans. This collaborative approach ensures holistic care tailored to each patient's needs.

SERVICES

- Benign and malignant hematology
- Medical oncology
- Radiation oncology
- Surgery, including breast surgical oncology

WRAPAROUND SERVICES

- Shared Epic electronic health system to ensure high quality, safe, accurate and timely communication between patients, surgery, radiation oncology, medical oncology and all specialties.
- Patient navigation
- Social services and counseling
- Full-service imaging
- Specialty pharmacy within Kootenai Health
- Board-certified oncology pharmacists
- Financial counseling and medication grants for qualified patients
- Tumor boards with multidisciplinary participation from surgery, radiation oncology, medical oncology, pathology, and radiology.
- Clinical research
- Genetic counseling (partnership with Myriad Genetics)
- Cancer Patient Support Fund
- Dietary services

American College of Surgeons Accreditations:

- **Commission on Cancer** - the "gold standard" for cancer care
- **NAPBC** for excellence in breast cancer care



KootenaiClinic

Cancer Services

Coeur d'Alene

700 W. Ironwood Dr, Suite 130
Coeur d'Alene, ID 83814
208.625.4700 **tel** 208.625.4701 **fax**

Post Falls

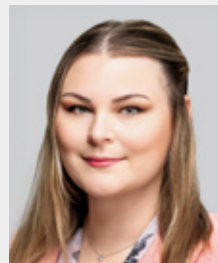
1400 E. Mullan Ave.
Post Falls, ID 83854
208.625.4900 **tel** 208.625.4911 **fax**

Sandpoint

520 N. 3rd Ave.
Sandpoint, ID 83864
208.265.7111 **tel** 208.265.7112 **fax**



Jeffrey Allen, MD
Medical Oncologist



Michalina Kupsik, MD
Breast Surgical Oncologist



Erik Schwalier, MD
Medical Oncologist



Cameron Shumway, DO
Medical Oncologist



Paul White, MD
Medical Oncologist



Noelle Beierle, APRN



Dary Hult, APRN



Ashley Manning, PA-C



Ashley Otto, APRN



Megan Whitmore, PA-C

Kootenai Heart Clinics is dedicated to delivering the highest level of comprehensive cardiovascular care. Our board-certified physicians provide expert general cardiology services, supported by a skilled team of advanced practice providers. In addition to general cardiac care, we offer specialized services in areas such as:

- Advanced cardiovascular imaging
- Advanced heart disease management
- Cardiac and pulmonary rehabilitation
- Cardiac catheterization
- Cardiac risk reduction management
- Invasive cardiac monitoring (CardioMems)
- Pacemaker implantation
- Rhythm monitoring
- Simple/complex coronary intervention
- Structural heart procedures
 - ▶ Transcatheter Aortic Valve Replacement (TAVR)
 - ▶ Left Atrial Appendage Occlusion (LAAO)
 - ▶ Mitral Transcatheter Edge-to-Edge Repair (TEER)
 - ▶ Congenital defect closure (PFO, ASD)

Cardiovascular Imaging Services Offered:

- Cardiac Coronary Computed Tomography Angiography (CCTA)
- Cardiac Magnetic Resonance Imaging (MRI)
- Cardiac nuclear imaging
- Echocardiography
- Stress testing
 - ▶ Stress echocardiography
 - ▶ Treadmill exercise testing
- Vascular ultrasound



Charles Cui, MD
Interventional Cardiologist



Brett Eliuk, DO
General Cardiologist



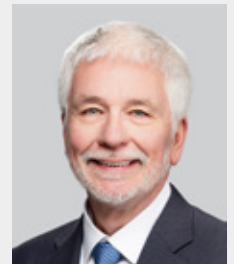
Donny Engles, MD
Interventional Cardiologist



Ronald Fritz, DO
General Cardiologist



Ronald Jenkins, MD
Interventional Cardiologist



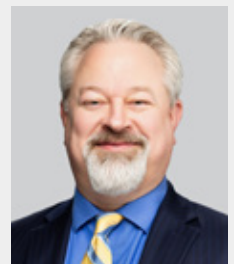
Kevin Kavanaugh, MD
Interventional Cardiologist



Mary Larson, MD
General Cardiologist



Pablo Michel Sanchez, MD
General Cardiologist



Aaron Notestine, MD
General Cardiologist



Elizabeth Rau, MD
Interventional Cardiologist



Giselle Statz, MD
General Cardiologist



Cardiovascular Services

700 W. Ironwood Drive, Suite 320
Coeur d'Alene, ID 83814
208.625.5250 **tel** 208.625.5251 **fax**

Post Falls

1300 E. Mullan, Suite 900
Post Falls, ID 83854
208-625-5530 **tel** 208-625-5531 **fax**

Sandpoint

423 N. 3rd Ave., Suite 355
Sandpoint, ID 83864
208-265-7070 **tel** 208-265-7071 **fax**

Moscow

2301 W. A Street, Suite C
Moscow, ID 83843
208-997-3900 **tel** 208-769-8639 **fax**

Lewiston

338 6th Street
Lewiston, ID 83501
208-816-5550 **tel** 208-746-2521 **fax**

*Consultation services are available
in the following locations:*

Bonnars Ferry

Moscow

Cottonwood

Grangeville

Orofino

Smelterville

St. Maries



Shawn Taylor, DO
General Cardiologist



Mark Troiano, DO
Interventional Cardiologist



Eric Wallace, DO
Interventional Cardiologist



Michael Williams, MD
General Cardiologist



Taffie Bowman, APRN



Jared Brizendine, PA-C



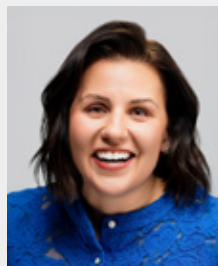
Paul Fontana, APRN



Michael Mohr, PA-C



Hank Petersen, PA-C



Savannah Starley, PA



Mary Szymanski, APRN



Shannon Thistle, PA-C



Belinda VanDitto, APRN

Patients can expect exceptional, patient-centered care at Kootenai Clinic Cardiothoracic Surgery. Our team of highly skilled and experienced cardiothoracic surgeons are dedicated to delivering outstanding outcomes with compassion and precision. We focus on advanced surgical interventions for heart and lung conditions, prioritizing patient well-being, comfort, and recovery.

SERVICES OFFERED

- Coronary Artery Bypass Grafting (CABG)
- Heart valve repair and replacement (aortic, mitral, tricuspid)
- Minimally invasive cardiothoracic surgery
- Lung resection (lobectomy, pneumonectomy, wedge resection)
- Robotic Surgery
- Esophagectomy for esophageal cancer
- Mediastinal mass resection
- Thoracic aortic aneurysm repair
- Atrial septal defect (ASD) and ventricular septal defect (VSD) repair
- Pericardial disease treatment (pericardiectomy, pericardial window)
- Thoracoscopy/video-assisted thoracoscopic surgery (VATS)
- Pleural disease management (pleurodesis, decortication)

GENERAL CARDIOTHORACIC CONSULTATIONS

- Coronary artery disease
- Valvular heart disease
- Lung nodules or masses
- Chest wall abnormalities
- Ascending aortic aneurysms/dissections



KootenaiHealth

Cardiothoracic Surgery

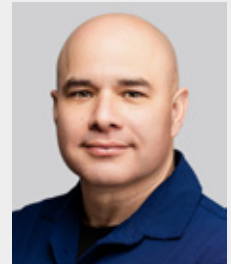
2003 Kootenai Health Way., Suite 300
Coeur d'Alene, ID 83814
208.625.4120 **tel** 208.625.4121 **fax**



Robert Burnett, MD
Cardiothoracic Surgeon



Tori Lennox, MD
Cardiothoracic Surgeon



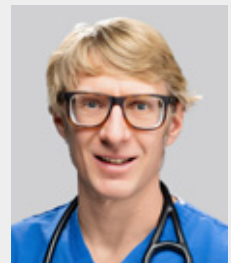
Erick Montero, MD
Cardiothoracic Surgeon



Laurel Cope, PA-C



Jamie Danish, APRN



Kurt Kohler, PA-C



Stuart Sharp, PA-C

Our Electrophysiology (EP) Services offer advanced diagnostic and treatment options for patients experiencing arrhythmias. Backed by a dedicated team of board-certified electrophysiologists, we combine cutting-edge technology, personalized care, and a commitment to heart health that sets us apart in the Inland Northwest.

CONDITIONS TREATED

- Atrial fibrillation (AFib)
- Supraventricular tachycardia (SVT)
- Ventricular tachycardia
- Bradycardia (slow heart rhythm)
- Heart block
- Syncope and fainting episodes
- Implantable device management (pacemakers and defibrillators)

SERVICES OFFERED

- Catheter Ablation for AFib, SVT, and other arrhythmias
- Pacemaker and ICD implantation and follow-up
- Loop recorder implantation
- Medication management and rhythm optimization
- Remote monitoring and patient education



Michele Murphy Cook, MD



Clinton Thurber, MD



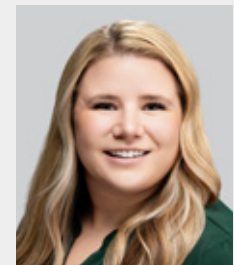
Connie Keibler, APRN



Raveena Padda, PA-C



Erik Spletter, PA-C



Sarah Wagstaff, APRN



Electrophysiology Cardiology

700 W. Ironwood Drive, Suite 320

Coeur d'Alene, ID 83814

208.625.5232 **tel** 208.625.3985 **fax**

Kootenai Clinic Vascular Surgery specializes in diseases of arteries and veins. Our team of board-certified surgeons and advanced practice providers specialize in the diagnosis and management of diseases affecting all parts of the vascular system, excluding the heart and brain.

Our surgeons treat a wide variety of vascular issues through surgery, minimally invasive procedures, or a combination of both.

CONDITIONS TREATED

- Abdominal aortic aneurysms (descending)
- Aortoiliac occlusive disease
- Aortic dissection
- Aneurysms (carotid, popliteal, visceral)
- Carotid artery disease
- Claudication
- Diabetic ulcers
- Thoracic outlet syndrome
- Peripheral artery disease (PAD)
- Renal vascular disease
- Visceral artery disease
- Venous disease
- Varicose veins

SURGICAL PROCEDURES

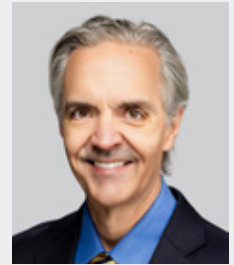
- Aneurysm repair
- Arterial bypass
- Carotid artery disease
- Dialysis access
- Endovascular angioplasty, atherectomy, & stenting
- Minimally invasive interventions
- Varicose veins procedures
- Radiofrequency ablation
- Sclerotherapy
- Phlebectomy
- VenaSeal
- Varithena



Bryce French, MD
Vascular Surgeon



Philip Kladar, MD
Vascular Surgeon



Gregory Landry, MD
Vascular Surgeon



Matthew Low, MD
Vascular Surgeon



Marilyn Aenchbacher,
PA-C



David Fremouw, PA-C



Lauren Lane, PA-C



Kootenai Clinic

Vascular Surgery

700 W. Ironwood Drive, Suite 350
Coeur d'Alene, ID 83814
208.625.5222 **tel** 208.625.5223 **fax**

*Consultation services are available
in Sandpoint, Smelterville, Moscow,
Cottonwood, Orofino, and Grangeville.*

Dermatology

Proudly Serving Northern Idaho and the Inland Northwest

Kootenai Clinic Dermatology provides comprehensive care for a wide range of skin conditions, including acne, eczema, psoriasis, and skin cancer. Our board-certified dermatologist is experienced in diagnosing and managing both routine and complex dermatologic diseases.

We offer multiple treatment modalities for skin cancer. Superficial lesions are often treated with cryotherapy, curettage, or topical agents. Invasive or high-risk lesions—such as basal cell carcinoma, squamous cell carcinoma, and melanoma—are managed with surgical excision per current clinical guidelines.

SERVICES OFFERED

- Allergy patch testing
- Complex medical dermatology
- Cyst removal
- Dermoscopy
- Hidradenitis suppurativa
- Lichen sclerosis
- Lichen planopilaris
- Lipoma removal
- Mole removal
- Skin cancer detection/excision
- Skin tag removal
- Seborrheic keratosis removal



Alicia Ogram, MD
Dermatologist



KootenaiClinic

Dermatology

Chinook Building
980 W. Ironwood Dr., Suite 01
Coeur d'Alene, ID 83814
208.625.4333 **tel** 208.625.4334 **fax**

Dr. Ogram is not currently accepting new patients.

Diabetes & Endocrinology

Proudly Serving Northern Idaho and the Inland Northwest

Kootenai Clinic Diabetes and Endocrinology uses a team-based approach to care for your patients. In addition to providing complete endocrinology care, we have a comprehensive diabetes education program that is accredited by the American Diabetes Association for quality patient education.

CONDITIONS TREATED

- Thyroid disease
- Adrenal disease
- Osteoporosis
- Parathyroid conditions
- Pituitary disorders
- Diabetes

DIABETES EDUCATION & SUPPORT

- Type 1 & Type 2 diabetes basics course
- Gestational diabetes care
- Diet education
- Glucose monitoring
- Insulin injections & pump training
- Intensive management skills
- Professional Continuous Glucose Monitoring (CGM) studies
- Integrated specialty pharmacy services

Diabetes Education Referral Information

Diabetes education provided by a Certified Diabetes Care and Education Specialist (CDCES) is covered by Medicare, Medicaid, and most major commercial insurances with a provider's referral.



Maria Rodebaugh, MD
Endocrinologist



Kelsey Chaumont, APRN



Meghan Gregg, APRN



Natalie Colla,
Certified Diabetes
Educator



Ashley Gorham,
Certified Diabetes
Educator



Sheila Schaal,
Certified Diabetes
Educator



KootenaiClinic

Diabetes & Endocrinology

1919 Lincoln Way, Suite 211
Coeur d'Alene, ID 83814
208.625.5500 **tel** 208.625.5501 **fax**

Ear, Nose, Throat, & Audiology

Proudly Serving Northern Idaho and the Inland Northwest

At Kootenai Clinic, our board certified otolaryngologists offer comprehensive diagnosis and treatment of ear, nose, and throat issues for both adult and pediatric patients.

COMMON CONDITIONS TREATED

- Ear problems (including middle ear infections)
- Eustachian tube dysfunction
- Hearing loss and hearing aids
- Tinnitus
- Vertigo
- Nasal obstruction
- Sinusitis
- Head and neck cancer and masses
- Salivary gland disorders
- Swallowing difficulties and throat tumors
- Thyroid and parathyroid conditions
- Tonsil problems
- Voice disorders
- Vagus nerve stimulation

PEDIATRIC CONDITIONS TREATED

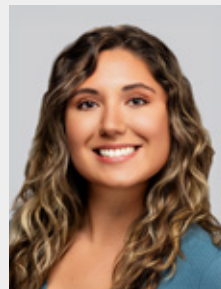
- Ear infections
- Sleep apnea
- Tonsil problems
- Dysphagia
- Tongue/lip ties



Daniel Cannon, MD
Otolaryngologist



Ian Smith, MD
Otolaryngologist



Senia Romero,
Audiologist



KootenaiClinic

Ear, Nose, Throat, & Audiology

Coeur d'Alene

700 W. Ironwood Dr., Suite 278
Coeur d'Alene, ID 83814
208.625.5160 **tel** 208.625.5733 **fax**

Sandpoint

423 N. 3rd Ave., Suite 355
Sandpoint, ID 83864
208.625.5160 **tel** 208.625.5733 **fax**

Gastroenterology & Endoscopy

Proudly Serving Northern Idaho and the Inland Northwest

Patients can anticipate exceptional and compassionate patient centered care at Kootenai Clinic Gastroenterology and Endoscopy. Comprising a team of highly skilled and experienced health care professionals, our clinic is dedicated to providing top-notch care and outcomes. From preventive screenings to advanced diagnostic procedures and comprehensive treatment plans, we prioritize patient well-being and comfort.

SERVICES OFFERED

- Colonoscopy
- Upper endoscopy
- Endoscopic retrograde cholangiopancreatography (ERCP)
- Enteroscopy (small bowel endoscopy)
- Inflammatory Bowel Disease Clinic
- Liver Disease/Cirrhosis Clinic
- Endoscopic ultrasound
- Esophageal manometry
- pH impedance studies/Bravo pH monitoring
- Small bowel capsule enteroscopy/PillCam
- Therapeutic endoscopy clinic
- GI nurse navigator support and integrated specialty pharmacy services
- General GI Consultations:
 - Gastroesophageal reflux disease (GERD)
 - Chronic constipation or diarrhea
 - Trouble swallowing/dysphagia
 - Follow-up of abnormal imaging tests



Daniel Hansen, MD
Gastroenterologist



Trace Heavener, DO
Gastroenterologist



David Johnson, MD
Gastroenterologist



Caleb Kelly, MD
Gastroenterologist



Matthew Lute, DO
Gastroenterologist



Kevin Webb, MD
Gastroenterologist



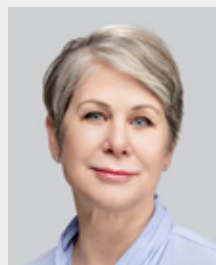
Christopher Wood, DO
Gastroenterologist



Lindsay Adams, APRN



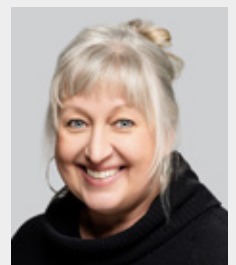
James McMahon, PA-C



Holly Pena, APRN



Mariah Petersen,
APRN



Krista Tickemyer, APRN



Gastroenterology & Endoscopy

Gastroenterology & Endoscopy

Proudly Serving Northern Idaho and the Inland Northwest

IMPROVED ACCESS

- Office visits within four weeks and wait list options
- Endoscopy referrals - contact within five business days and appointments within two weeks
- Expedited needs can be seen within a week for many conditions
- Self-referral for colonoscopy for average risk
- Contact us via Epic MyChart/portal
- Virtual care/telehealth visits available

QUALITY CARE

- Kootenai Clinic GI physicians adenoma (pre-cancerous polyp) detection rate is 54%
 - National benchmark is 25%
 - For every 1% increase in adenoma detection there is a 3% decrease in colon cancer risk



Britni Turkenburg, PA-C



Adam Van Schelt, PA-C



Ashley Vander Sys, PA-C



Amy Williams, PA-C



KootenaiClinic

Gastroenterology & Endoscopy

Gastroenterology - Coeur d'Alene

1919 Lincoln Way, Suite 415
Coeur d'Alene, ID 83814
208.625.4595 **tel** 208.625.4596 **fax**

Endoscopy - Coeur d'Alene

1919 Lincoln Way, Suite 416
Coeur d'Alene, ID 83814
208.625.4601 **tel** 208.625.4602 **fax**

Post Falls

1300 E. Mullan Ave., Suite 1800
Post Falls, ID 83854
208.625.4595 **tel** 208.625.4596 **fax**

General Surgery

Proudly Serving Northern Idaho and the Inland Northwest

Kootenai Clinic's general surgeons are board-certified and are trained and experienced in a wide range of surgical procedures. Kootenai Clinic offers a variety of surgical services, including general surgery, endoscopy and advanced laparoscopic procedures.

As graduates of nationally recognized university training programs, Kootenai Clinic's surgeons have experience in cancer care, endovascular procedures, trauma surgery, and colorectal surgery. They are also well-equipped to handle virtually any surgical illness and look forward to providing excellent care to surgical patients in conjunction with Kootenai Health for many years to come.

SURGICAL PROCEDURES

- Appendectomy
- Cholecystectomy
- Hernia repairs
- Colectomy/colon resection
- Breast surgery
- Thyroidectomy/Parathyroidectomy
- Small bowel surgery, including resection and repairs
- Laparoscopic and open exploratory surgery
- Skin and soft tissue procedures



Aaron Chalmers, MD
General Surgeon



Edward deTar, MD
General Surgeon



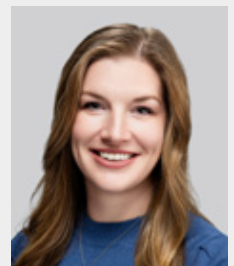
Heidi Jackson, MD
General Surgeon



Michael May, MD
General Surgeon



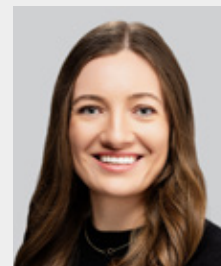
Marcus Torgenson, MD
General Surgeon



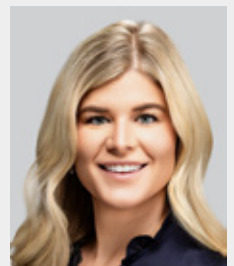
Kami Bowcut, PA-C



Brittney Brady, PA-C



Michelle Korthauer, PA-C



Elizabeth Landers, PA-C



General Surgery

700 W. Ironwood Dr., Suite 341
Coeur d'Alene, ID 83814
208.625.5200 **tel** 208.625.5201 **fax**

Infectious Disease

Proudly Serving Northern Idaho and the Inland Northwest

Kootenai Clinic Infectious Disease helps patients diagnose and treat acute and chronic illness due to infectious diseases. Our specialists work with patients and their primary care provider to provide a treatment plan to improve health.

COMMON CONDITIONS TREATED

- Complicated UTIs
- Chronic lung infections
- Endocarditis
- Fungal infections
- Hepatitis B
- Hepatitis C
- HIV
- Immunodeficiencies
- Meningitis
- Osteomyelitis
- Sexually transmitted diseases
- Skin and soft tissue infections
- Surgical infections
- Tick-borne diseases
- Travel medicine
- Tuberculosis



Sean Cook, DO



David Gierut, APRN



KootenaiClinic

Infectious Disease

700 W. Ironwood Dr., Suite 350

Coeur d'Alene, ID 83814

208.625.6970 **tel** 208.769.8649 **fax**

Lung & Asthma/Critical Care

Proudly Serving Northern Idaho and the Inland Northwest

Kootenai Clinic Lung and Asthma provides comprehensive care for patients with a variety of pulmonary problems. We offer in-house pulmonary function testing and can arrange for state-of-the-art diagnostic services including CT scans, PET scans, bronchoscopy, and polysomnography (sleep studies). We have established relationships with a variety of medical providers in the region who are important to the care of patients with pulmonary problems including cardiologists, cardiothoracic surgeons, and oncologists.

CONDITIONS TREATED

- Asthma
- Bronchiectasis
- Chronic Obstructive Pulmonary Disease (COPD)
- Interstitial lung disease
- Lung cancer
- Lung nodules
- Pneumonia
- Pulmonary fibrosis
- Pulmonary hypertension
- Pulmonary vascular disease
- Sarcoidosis



KootenaiClinic

Lung & Asthma

700 W. Ironwood Dr., Suite 378
Coeur d'Alene, ID 83814
208.625.3555 **tel** 208.769.8616 **fax**



Stephen Bartsch, MD
Pulmonary & Critical Care



Bridgit Bell, MD
Pulmonary & Critical Care



Chad Brizendine, MD
Pulmonary & Critical Care



Lyudmila Burkart, DO
Pulmonary & Critical Care



Sara Carson, MD
Pulmonary & Critical Care



Kevin Chang, MD
Pulmonary & Critical Care



Kathrine Giarra, MD
Critical Care



Todd Hoopman, MD
Pulmonary & Critical Care



Forrest Jespersen, MD
Pulmonary & Critical Care



Amanda Liggett, MD
Pulmonary & Critical Care



Robert Scoggins, MD
Pulmonary & Critical Care



Jeannette Zinggeler
Berg, MD
Pulmonary & Critical Care



David York, MD
Pulmonary & Critical Care

Lung & Asthma/Critical Care

Proudly Serving Northern Idaho and the Inland Northwest



Kootenai Clinic

Lung & Asthma

Sandpoint

423 N. 3rd Ave., Suite 355
Sandpoint, ID 83864
208.625.3555 **tel** 208.769.8616 **fax**

Moscow

2301 W. A Street, Suite C
Moscow, ID 83843
208.625.3555 **tel** 208.769.8616 **fax**

Lewiston

338 6th Street
Lewiston, ID 83501
208.625.3555 **tel** 208.769.8616 **fax**

Smelterville

Consultation services are available in Smelterville.



Robin Beard, APRN,
Pulmonary



Leah Bennett, APRN,
Pulmonary



Sydney Disselkamp,
APRN, Critical Care



Bree Ferguson, PA-C,
Critical Care



Jenna Ludwig, APRN,
Critical Care



Thomas Ryan, APRN,
Critical Care



Elizabeth Spaetzel,
APRN, Critical Care

Medicine Presurgical Assessment Clinic (MPAC)

Proudly Serving Northern Idaho and the Inland Northwest

Kootenai Health's Medicine Presurgical Assessment Clinic is a specialized service that evaluates and optimizes patients' medical conditions before they undergo surgery. The goal of this clinic is to ensure that patients are in the best possible health prior to their procedure, to minimize perioperative risks, reduce surgical delays or cancellations, and enhance recovery outcomes.

CANDIDATES INCLUDE PATIENTS WITH

- Obesity
- Heart disease
- Hypertension
- Respiratory issues
- Uncontrolled diabetes
- Blood sugar management issues

SERVICES

- Will work independently or in-coordination with PCP
- Fax referrals and/or via Epic
- Indicate if you want a pre-op visit prior to surgery during submitting a case request
- Order pre-laboratory work, EKGs, ECHO, stress tests, etc.



Marc Granrud, MD



Greg Johnson, DO



KootenaiHealth

Medicine Presurgical Assessment Clinic

Kootenai Health
South entrance (left of the E.D.)
Take red elevator to third floor, Suite 310
2003 Kootenai Health Way
Coeur d'Alene, ID 83814
208.625.3110 **tel** 208.625.4471 **fax**

Memory Consultation Clinic

Proudly Serving Northern Idaho and the Inland Northwest

Our Memory Consultation Clinic provides diagnosis, treatment, education and support for individuals with memory loss.

Consider referring patients that have cognitive concerns for:

- Diagnosis confirmation
- Seeking early-stage aggressive treatment options for Alzheimer's Disease
- Unusual presentation, such as:
 - Rapid progression (over < 6 months)
 - Early onset (< 65 years old)
 - Concerns for Lewy Body or Frontotemporal degeneration
- Frequent memory lapses, disorientation, or financial errors
- Has a family history of dementia or Alzheimer's
- Notable changes in mood, personality, or behavior

Anticipate two visits for:

- Assessment
- Diagnosis
- Treatment plan and options
- Cognitive care planning
- Referral for further specialty testing, when needed



Susan Melchiorre, MD



Jessica Greensides, APRN



Kootenai Clinic

Internal Medicine

Coeur d'Alene

1919 Lincoln Way, Suite 110
Coeur d'Alene, ID 83814
208.625.4515 **tel** 208.625.4516 **fax**

Nephrology - Kidney & Hypertension Services

Proudly Serving Northern Idaho and the Inland Northwest

Kootenai Clinic Nephrology – Kidney and Hypertension Services offers medical treatment of hypertension and kidney disease, including the use of dialysis to treat patients with advanced, end-stage kidney failure.

CONDITIONS TREATED

- Medical management of kidney stones
- Hypertension
- Kidney disorders
- Electrolyte disorders
- Pre/post transplant care
- Dialysis
- Inpatient hemodialysis and continuous-flow plasmapheresis
- Inpatient and outpatient consultative services
- Virtual/telehealth visits available



Kootenai Clinic

Nephrology

Coeur d'Alene

700 W. Ironwood Dr., Suite 375
Coeur d'Alene, ID 83814
208.625.6100 **tel** 208.625.6101 **fax**

Sandpoint

423 N. 3rd Ave., Suite 355
Sandpoint, ID 83864
208.625.6100 **tel** 208.625.6101 **fax**

Moscow

2301 W. A Street, Suite C (lower level)
Moscow, ID 83843
208.625.6100 **tel** 208.625.6101 **fax**

Smelterville

Consultation services are available in Smelterville.



Scott Bieber, DO
Nephrologist



Casey Cotant, MD
Nephrologist



Tiana Jespersen
Nizamic, MD
Nephrologist



Brendan Mielke, MD
Nephrologist



Emily Petersen, MD,
Nephrologist



Evelyn Considine, APRN



Martin Solon, APRN

Orthopedics

Proudly Serving Northern Idaho and the Inland Northwest

Our team of board-certified orthopedic surgeons and specially trained staff treat patients who are suffering from injuries involving the skeleton, muscles, cartilage, tendons, ligaments, joints, and connective tissue. Our team helps patients improve their quality of life and resolve issues that make day-to-day activities painful. Our specialists are committed to helping patients get back to the activities they love through specialized surgical and non-surgical care.

SERVICES INCLUDE

- Complex hip, knee, shoulder, and ankle replacement
- Surgery of the knee, elbow, shoulder, ankle, and hand
- Treatment of fractures and dislocations
- Sports medicine
- Hand trauma
- Treatment of inflammatory disorders: tendinitis, arthritis and more
- Full-service advanced imaging
- Physical therapy

HAND CONDITIONS TREATED

- Carpal tunnel syndrome
- Cubital tunnel syndrome
- De Quervain's tendonitis
- Dupuytren's Disease (Contractures)
- Ganglion cysts
- Broken hand
- Thumb arthritis
- Trigger finger
- Tennis elbow (lateral epicondylitis)



Robert Blease, MD
Orthopedic Surgeon
Traumatologist



Joseph Bowen, MD
Orthopedic Surgeon



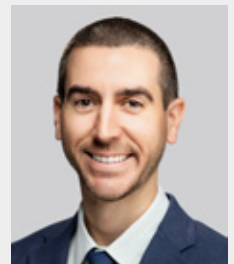
Jonathan Linthicum, MD
Orthopedic Surgeon



Caleb Netting, MD
Orthopedic Surgeon
Hand Surgeon



Patrick Mullen, MD
Hand Surgeon



Edward Rooney, MD
Orthopedic Surgeon
Foot & Ankle Surgeon



Gregory Staeheli, MD
Orthopedic Surgeon
Traumatologist



Connor Quinn, MD
Orthopedic Surgeon

Orthopedics



Kootenai Clinic

Orthopedics

Coeur d'Alene

2177 W. Ironwood Center Dr.
Coeur d'Alene, ID 83814
208.625.6700 **tel** 208.625.6701 **fax**

Coeur d'Alene - Hand Surgery

2121 W. Ironwood Center Dr.
Coeur d'Alene, ID 83814
208.625.4680 **tel** 208.625.4681 **fax**

Post Falls

1296 E. Polston Ave.
Post Falls, ID 83854
208.625.6700 **tel** 208.625.6701 **fax**

Orofino

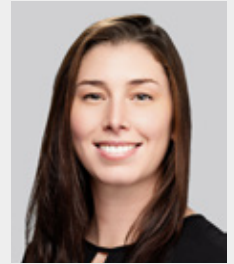
Consultation services are available in Orofino.



Morgan Bahm, APRN



Nicole Bilyeu, PA-C



Marquita Brooks, PA-C



Daniel Ells, PA-C



Tara Flores, APRN



Tareyn Green, PA-C



Nicholas Hill, APRN



Will Moyer, PA-C



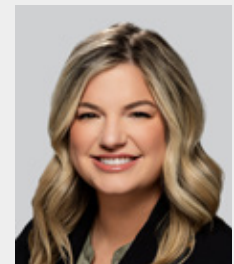
Julie Robinson, APRN



Seth Rosenthal, PA-C



John Steinbacher, PA-C



Morgan Shannon, APRN



Teresa Ragan, APRN

Plastic & Reconstructive Surgery

Proudly Serving Northern Idaho and the Inland Northwest

Dr. Benjamin Mandel, board-certified in plastic and reconstructive surgery and a fellow of the American College of Surgeons, provides a wide variety of reconstructive and cosmetic procedures. Dr. Mandel's goal is to meet the health care needs of patients in the Inland Northwest, including Coeur d'Alene, Spokane, Northern Idaho, Eastern Washington and Montana. Kootenai Clinic's plastic and reconstructive surgery practice is located in beautiful Coeur d'Alene, Idaho in a private suite in the Chinook Building.



Benjamin Mandel, MD



Michelle Cano-Keighley,
APRN

SURGICAL PROCEDURES

Reconstructive Surgery

- Breast reduction
- Breast reconstruction
- Skin cancer
- Wounds
- Body contouring after weight loss

Aesthetic Procedures

- Breast augmentation
- Breast lift (Mastopexy)
- Tummy tuck (Abdominoplasty)
- Liposuction
- Facelift
- Eyelid lift



KootenaiClinic

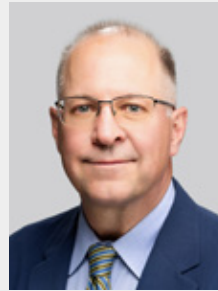
Plastic & Reconstructive Surgery

Chinook Building
980 W. Ironwood Dr., Suite 01
Coeur d'Alene, ID 83814
208.625.4333 **tel** 208.625.4334 **fax**

Podiatry

Proudly Serving Northern Idaho and the Inland Northwest

Dr. John Mytych is a board-certified podiatrist specializing in the diagnosis, treatment, and prevention of conditions affecting the foot, ankle, and lower extremities. With extensive training in both surgical and non-surgical approaches, Dr. Mytych collaborates closely with primary care physicians, orthopedic surgeons, endocrinologists, and other health care professionals to ensure comprehensive care—especially in cases involving diabetes and chronic foot pain.



John Mytych, DPM
Podiatrist

SERVICES INCLUDE

- Diabetic foot care
- Foot and ankle wounds
- Neuropathy of the foot
- Osteomyelitis of the foot
- Plantar fasciitis
- Toe wound
- Toe amputation evaluation
- Toenail disease or disorder



KootenaiClinic

Podiatry

2120 W. Ironwood Center Dr.
Coeur d'Alene, ID 83814
208.625.6944 **tel** 208.625.6945 **fax**

Rheumatology

Proudly Serving Northern Idaho and the Inland Northwest

At Kootenai Clinic Rheumatology, our experienced physician and staff treat patients with a variety of rheumatic and autoimmune disorders. Our team helps patients improve their quality of life and resolve issues that make day-to-day activities painful. Our specialists are committed to helping patients get back to the activities they love through specialized treatments and care plans.

COMMON CONDITIONS TREATED

- Rheumatoid arthritis
- Psoriatic arthritis
- Ankylosing spondylitis
- Lupus
- Gout
- Scleroderma
- Myositis
- Vasculitis
- Uveitis
- Psuedogout
- Sjögren's syndrome

PHARMACY & IMPROVED ACCESS

- Embedded pharmacy support
- Virtual/telehealth visits available



Sheena Henry, MD
Rheumatologist



KootenaiClinic

Rheumatology

700 W. Ironwood Dr., Suite 275
Coeur d'Alene, ID 83814
208.625.4780 **tel** 208.625.4781 **fax**

Sleep Medicine

Proudly Serving Northern Idaho and the Inland Northwest

Kootenai Clinic Sleep Medicine is accredited by the American Academy of Sleep Medicine. Our providers help diagnose and treat a variety of sleep disorders in both adult and pediatric patients.

CONDITIONS TREATED

- Sleep apnea
- Primary snoring
- Insomnia
- Restless Leg Syndrome
- Narcolepsy
- Parasomnias

TESTING OFFERED

- Home sleep study
- Diagnostic polysomnogram (PSG)
- CPAP titration
- BiPAP titration
- Multiple Sleep Latency Test (MSLT)
- Actigraphy



Walter Fairfax, MD



Eloy Espinoza, MD



Sheena Young, APRN



KootenaiClinic

Sleep Medicine

700 Ironwood Dr., Suite 258
Coeur d'Alene, ID 83814
208.625.6877 **tel** 208.625.6878 **fax**

Sleep Disorders Center

2003 Kootenai Health Way
Coeur d'Alene, ID 83814

Kootenai Clinic Maternal Fetal Medicine (MFM) prioritizes the health and well-being of expectant mothers and their babies.

CONDITIONS TREATED

- Abnormal alpha-fetoprotein (AFP)
- Complex maternal or fetal cardiac disease
- Fetal anemia
- Fetal arrhythmia
- Fetal bladder outlet obstruction
- Fetal congenital diaphragmatic hernia
- Gastroschisis or omphalocele
- Inherited and acquired thrombophilias
- Lower urinary tract obstruction (LUTO)
- Maternal rhesus (Rh) factor disease or atypical alloimmunization
- Placenta previa or placenta accreta
- Spina bifida
- Twin-twin transfusion syndrome
- Twin reversed arterial perfusion (TRAP) sequence or acardiac twin

TESTS AND PROCEDURES

- 3D fetal ultrasound
- Abnormal alpha-fetoprotein (AFP) or quadruple screen test
- Chorionic villus sampling
- Fetal therapy, including intrauterine blood transfusion, laser ablation of twin transfusion and radiofrequency ablation
- First trimester Down syndrome screening
- Genetic amniocentesis
- Increased maternal or paternal age
- Increased risks for genetic conditions
- Percutaneous umbilical blood sampling



Jason Pates, MD



KootenaiHealth

Maternal Fetal Medicine

2003 Kootenai Health Way, Suite 310
Coeur d'Alene, ID 83814
208.625.4970 **tel** 208.625.4991 **fax**

Kootenai Health's Level III Neonatal Intensive Care Unit (NICU) cares for babies born as early as 26 weeks gestation. Our experienced, board-certified neonatologists care for these fragile newborns in-house 24/7.

SERVICES OFFERED

- Standard Level III NICU Procedures: PICC line, umbilical lines, intubations, needle thoracentesis, chest tubes
- Total Body Cooling for HIE
- ESC pathway for NAS infants
- Small baby unit pathway for infants born ≤ 1500 grams
- On-site lactation consultation 365 days/year
- Infant CPR training prior to discharge
- Cuddlers
- On-campus hospitality center

SUBSPECIALTY CARE ACCESS CONSULTATION

- Cardiology - 24/7 Echos, EKGs
- Neurology - EEGs
- Radiology - 24/7 ultrasound (RUS, HUS, Abdominal US), MRIs, Fluoroscopy (UGI)

DAILY ROUNDING WITH SPECIALIZED TEAM

- Respiratory Therapists
- Pharmacists
- Case management
- Social services
- Lactation services
- Dietitians specialized in neonatal nutrition
- Developmental therapy



Brook Lang, MD
Neonatologist



Michael Carl, MD
Neonatologist



Sarah Claussen, DO
Neonatologist



Bryan Furr, DO
Neonatologist



Neonatology

2003 Kootenai Health Way
Coeur d'Alene, ID 83814
208.625.5088 tel

Women's & Children's Services

Obstetrics & Gynecology

Proudly Serving Northern Idaho and the Inland Northwest

At Kootenai Clinic, our team of board-certified obstetricians and certified nurse-midwives are proud to offer comprehensive OB-GYN services tailored to meet the individual needs of your patients. We are committed to a patient-centered approach—taking the time to listen, provide clear information, and support shared decision making throughout each stage of care.

OBSTETRICAL CARE

- Obstetrics*
- Postpartum care*
- Cesarean delivery
- Infertility
- Family planning*
- Prenatal care*
- Labor and delivery*
- High-risk pregnancy
- Sterilization
- 3-D and 4-D ultrasounds

GYNECOLOGY

- Menopausal care
- Urinary incontinence
- Abnormal pap smear
- Endometrial ablation
- Tubal microsurgery
- Minimally invasive surgery
- Hysterectomy
- Menstruation problems, PMS
- Vaginal and bladder infection
- Gynecological surgery
- Hysteroscopy
- Laparoscopy
- Bladder repair
- Labiaplasty

* Routine prenatal and delivery care offered by our OB-GYN team or Nurse Midwife team.



Kootenai Clinic

Obstetrics & Gynecology

Coeur d'Alene - Chinook Building
980 W. Ironwood Dr., Suite 306
Coeur d'Alene, ID 83814
208.625.4970 **tel** 208.625.4991 **fax**

Post Falls - Kootenai Clinic
1300 E. Mullan Ave., Suite 500
Post Falls, ID 83854
208.625.4970 **tel** 208.625.4991 **fax**

Sandpoint
423 N. 3rd Ave., Suite 355
Sandpoint, ID 83864
208.625.4970 **tel** 208.625.4991 **fax**



Shelby Apodaca, MD
Obstetrician/Gynecologist



Brenna McCrummen, MD
Obstetrician/Gynecologist



Nathan Meltzer, MD
Obstetrician/Gynecologist



Madeline Suppiger, MD
Obstetrician/Gynecologist



Katie Van Cleave, DO
Obstetrician/Gynecologist



Danielle Clarkson, CNM



Leanne Elisha,
PMHNP-BC



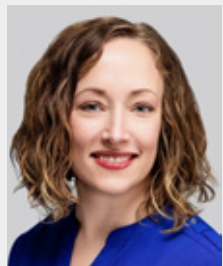
BreAnne Huss, CNM,



Faith Krull, CNM



Kimberly Mills, CNM,



Katy Warzecha, CNM



Ronda Williamson, CNM

Women's & Children's Services

Obstetric Hospitalists

Proudly Serving Northern Idaho and the Inland Northwest

Kootenai Health features an in-house obstetrics (OB) hospitalist program. This program features four board-certified providers who offer expert OB consultation, diagnosis, treatment, and delivery 24 hours a day, 365 days a year. Pregnant women who need emergency or unscheduled hospital care will be seen by an OB hospitalist when a patient's primary OB-GYN is unavailable or if a patient does not have an OB-GYN. This around-the-clock model provides immediate access to expert care for all pregnancy and childbirth emergencies in the labor and delivery unit and the emergency department. This team will work closely with community providers to ensure seamless care transitions from the hospital to clinic physicians.

The team looks forward to providing compassionate support for women during one of the most important events of their life.



Sarah Gregory, MD
OB Hospitalist



Julie Meltzer, MD
OB Hospitalist



Robert Milligan, MD
OB Hospitalist



Sean Urquhart, MD
OB Hospitalist



KootenaiHealth

Obstetric Hospitalists

2003 Kootenai Health Way
Coeur d'Alene, ID 83814
208.625.6908 **tel**

Women's & Children's Services

Pediatric Hospitalists

Proudly Serving Northern Idaho and the Inland Northwest

Our pediatric hospitalists provide exceptional care for children up to age 18 with a wide range of pediatric diagnoses and offer seamless transitions to a higher level of care when warranted. Our program is dedicated to the care of hospitalized children at Kootenai Health to ensure consistent pediatric-specific care around the clock.

Children at Kootenai Health will be cared for by a dedicated group of compassionate pediatric-specialized team members including:

- Nurses
- Clinical nutritionists
- Developmental therapists
- Respiratory therapists

PEDIATRIC DEPARTMENT CONSISTS OF:

- Six private rooms
- A designated pediatric and family-centered care unit

DIAGNOSIS WE CARE FOR:

- Sepsis
- Asthma
- Croup
- Bowel clean out
- Failure to thrive
- Urinary tract infections
- Skin infections
- Anaphylaxis
- Diabetes
- Head trauma
- Bronchiolitis
- Gastrointestinal issues
- Dehydration
- Feeding intolerance
- Acute kidney injury
- Ingestion
- Hyperbilirubinemia

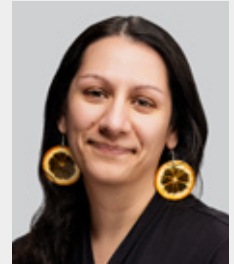
Pediatric patients are admitted through our transfer center available by calling 1-800-200-1511.



Randi Edwards, MD
Pediatric Hospitalist



Emily McCarty, MD
Pediatric Hospitalist



Hinah Parker, MD
Pediatric Hospitalist



KootenaiHealth

Pediatric Hospitalists

2003 Kootenai Health Way
Coeur d'Alene, ID 83814
208.625.5930 **tel**

Wound Care

Proudly Serving Northern Idaho and the Inland Northwest

Kootenai Clinic Wound Care offers advanced wound treatment and Hyperbaric Medicine to patients across the Inland Northwest. We specialize in diagnosing, treating, and managing chronic, complex, or non-healing wounds with a focus to promote healing, prevent complications, and improve quality of life.

While most wounds heal naturally, certain conditions may impact the healing process such as advanced age, chronic medical conditions, poor circulation, immune system compromise, nutritional deficiencies, limited mobility, or a history of radiation therapy. In these cases, wounds may become harder to heal requiring specialized evaluation with a treatment plan to promote healing and prevent complications.

A referral to the wound clinic is recommended if a wound has not improved in two weeks, hasn't healed in six weeks, or shows signs of infection, poor circulation, or tissue damage.

CONDITIONS TREATED

- Ulcers (arterial, diabetic, and venous stasis)
- Pressure injuries (bedsores/ulcers)
- Surgical site complications
- Burns (thermal, chemical, or radiation)
- Skin tears and lacerations
- Traumatic wounds
- Pyoderma gangrenosum
- Radiation-induced wounds
- Chronic osteomyelitis related wounds
- Infected grafts or flaps

SERVICES OFFERED

- Debridement
- Total-contact casting
- Hyperbaric oxygen therapy (HBOT)
- Advanced skin substitutes
- Negative pressure wound therapy (Wound Vac)
- Compression therapy (multi-layer wraps)
- Ultrasonic mist treatment
- Platelet-rich plasma for venous and diabetic foot ulcers
- Ostomy care (nurse-led)



Joanne Huestis, PA-C



Jennifer Stallings, APRN

Wound Care

Proudly serving Northern Idaho and the Inland Northwest

HYPERBARIC OXYGEN THERAPY (HBOT)

Hyperbaric oxygen therapy is a medical treatment that involves breathing pure oxygen in a pressurized room or chamber. This therapy increases the amount of oxygen in the patient's blood, promoting healing and fighting infections more effectively.

BENEFITS OF HBOT

- Accelerates wound healing
- Reduces swelling and inflammation
- Enhances new blood vessel formation
- Improves infection control
- Promotes the growth of new skin cells

OUTPATIENT CONDITIONS TREATED WITH HBOT

- Diabetic foot ulcers (Wagner grade III or worse)
- Radiation injuries (radiation cystitis, proctitis, colitis, enteritis, laryngeal injuries with dysphagia, osteoradionecrosis, and soft tissue radionecrosis)
- Compromised skin grafts and flaps
- Chronic refractory osteomyelitis
- Sudden sensorineural hearing loss



KootenaiClinic

Wound Care

2120 W. Ironwood Center Dr.

Coeur d'Alene, ID 83814

208.625.6944 **tel** 208.625.6945 **fax**

